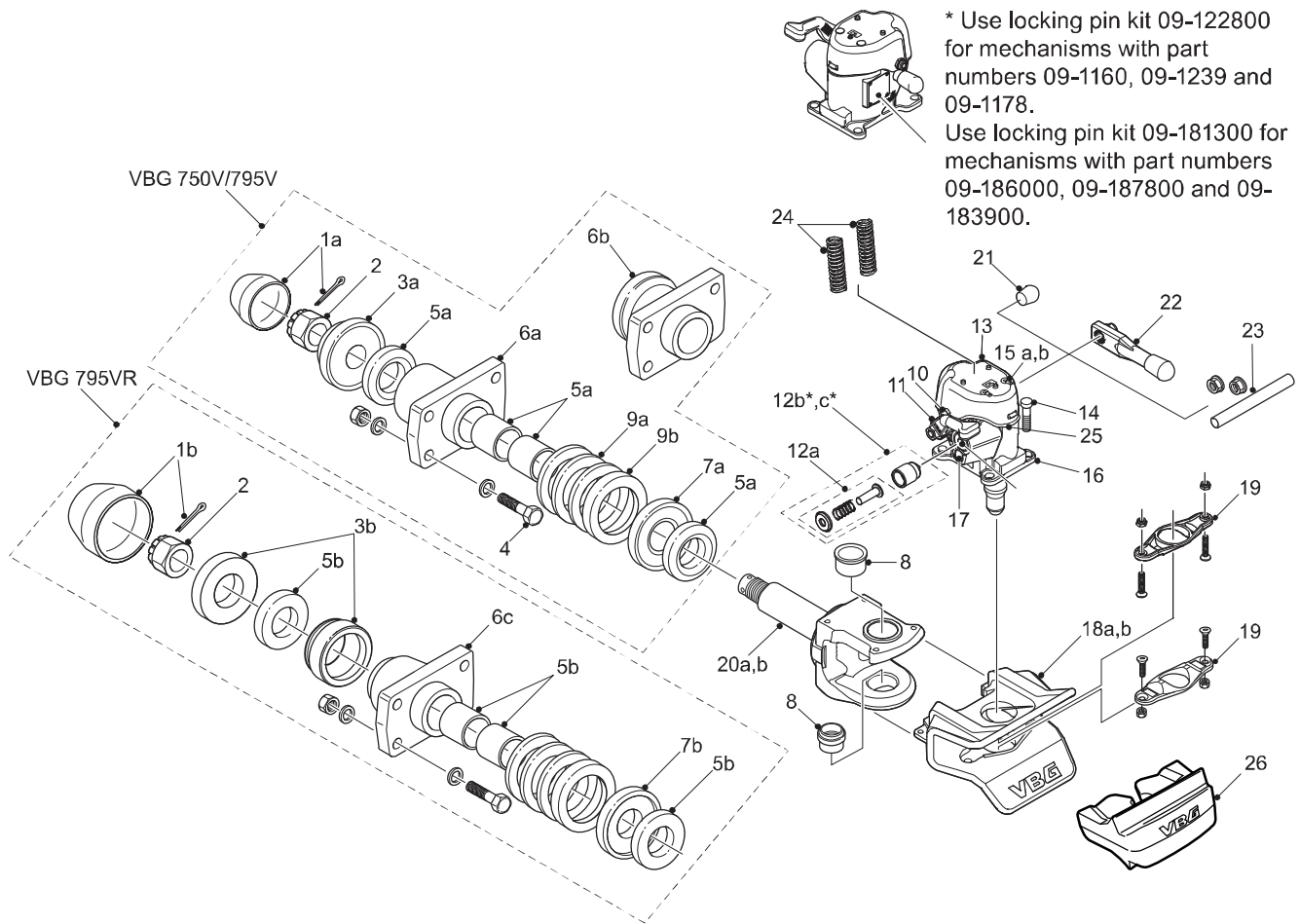


VBG 750V/795V/795VR



* Use locking pin kit 09-122800 for mechanisms with part numbers 09-1160, 09-1239 and 09-1178.
Use locking pin kit 09-181300 for mechanisms with part numbers 09-186000, 09-187800 and 09-183900.

Pos	Part No.	Description	Pos	Part No.	Description
1a	09-065400	Nut cover, incl. split pin 750V/795V	15a	09-177500	Grease plug, 10-pack
1b	09-125400	Nut cover, incl. split pin 795VR	15b	09-127000	Grease plug, 3-pack
2	36-021800	Castellated nut	16	09-119000	Mechanism incl Pos 8, 14, 19 (x2)
3a	18-054900	Bearing plate, inner	17	09-127100	Plastic plug
3b	09-125500	Bearing box kit 795VR, inner	18a	09-069700	Guiding funnel 795V/795VR
4	05-063400	Bolt kit	18b	09-069800	Guiding funnel 750V
5a	09-066200	Rubber bearing kit 750V/795V, incl pos 1a	19	09-066100	Wear plate (1 kit used for 750V and 2 kits for 795V/795VR)
5b	09-125600	Rubber bearing kit 795VR, incl pos 1b	20a	09-067100	Coupling jaw 795V/795VR incl pos 2, 8, 18a
6a	09-067300	Drawbeam sleeve VBG 795V incl pos 4, 5a	20b	09-067000	Coupling jaw 750V incl pos 2, 8, 18b
6b	09-067200	Drawbeam sleeve VBG 750V incl pos 4, 5a	21	09-123700	Cap
6c	09-125700	Drawbeam sleeve VBG 795VR incl pos 4, 5b	22	09-123300	Handle right
7a	18-054700	Bearing plate, outer 750V/795V	23	09-126400	Sleeve kit for handle 67 mm (for moving handle from left to right side)
7b	09-125800	Bearing plate, outer 795VR	24	09-126500	Closing spring kit
8	09-068400	Bushing	25	09-177600	Sealing kit, cover
9a	18-003000	Bar spacer washer 4 mm kit	26	09-014500	Protective insert
9b	18-066400	Bar spacer washer 10 mm			
10	09-123600	Bolt kit for mechanism cover	09-119700		Conversion kit 3.0, pos 16 and pos 11 p. 17
11	09-123200	Handle left	09-120100		Conversion kit 3.0, pos 16 and pos 11 p. 17, incl Sensor compl pos 26 p.17
12a	09-126300	Signal pin kit	09-119500		Renovation 750V/795V, pos 5a, 16 and pos 11 p. 17
12b*	09-122800	Indicator & locking device	09-119900		Renovation 750V/795V incl Sensor compl (pos 26 p. 17)
12c*	09-181300	Indicator & locking device			
13	09-123100	Mechanism cover complete kit			
14	09-120800	Bolt kit			